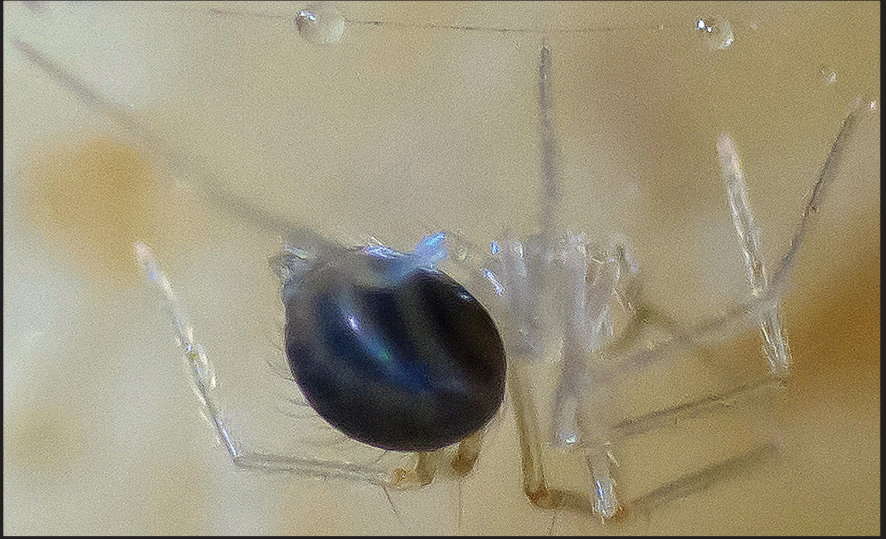


UC SANTA CRUZ CAMPUS NATURAL RESERVE

SANTA CRUZ TELEMID SPIDER



No photos are available for the Santa Cruz Telemid Spider
Top: *Telema tenella*; Bottom: Unidentified European telemid

Brandon Sanchez

Scientific Name: *Telema* sp.
Common Name: Santa Cruz
Telemid Spider

Global Rarity: Critically
Imperiled/Imperiled

State listing: Critically
Imperiled/Imperiled

UCSC Rarity: Very rare

General Description

The Santa Cruz telemid spider (*Telema* sp.) is a species of spider endemic to California and is considered one of the rarest spiders in North America. This spider is only found within a few caves within Cave Gulch in Santa Cruz County in central California. Many other species of this genus can be found in both cave and above-ground habitats elsewhere in California.

Threats

1. Development that may impact karst environments
2. Human impacts to cave environments, including spray-painting, smoke, and disturbances of rocks on the cave walls and floors

Geographic Range

The Santa Cruz Telemid Spider can be found in a few of the Cave Gulch caves in Santa Cruz, California.

Conservation Status

Critically Imperiled

Identification

The Santa Cruz Telemid Spider is the only 6-eyed spider known within the Cave Gulch caves. This tiny spider measures just 1-2 mm in length and builds sheet webs below rocks or within irregular surfaces of cave walls.

Life History

Habitat: Can be found throughout the cave gulch in Santa Cruz

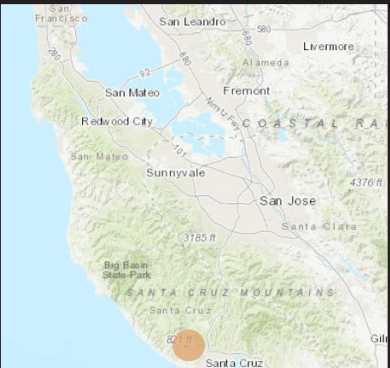
Reproduction: Unknown

Behavior: Unknown

Diet: Unknown, but likely limited to tiny invertebrates

Ways You Can Help

1. Stay out of caves with the Cave Gulch region of Santa Cruz County



References and Photo Credits

NatureServe Explorer. 2021. Santa Cruz Teleman Spider *Telema* sp. 1. Retrieved from https://explorer.natureserve.org/Taxon/ELEMENT_GLOBAL.2.109977/Telema_sp_1 on 30 June 2021.

U.S. Fish and Wildlife Service (USFWS). 1994. Endangered and threatened wildlife and plants; animal notice of review. Federal Register, Department of the Interior 59.

Ubick, D. 2001. Cavernicolous invertebrates of Cave Gulch, Santa Cruz County, California. Department of Entomology, California Academy of Sciences, San Francisco, CA. Retrieved from <https://docs.google.com/viewer?url=https%3A%2F%2Fwww.parks.ca.gov%2Fpages%2F734%2Ffiles%2Fcavebio.pdf> on 30 June 2021.

Cover Page Top: Planas, Enric. Licensed Creative Commons Attribution 3.0. Originally featured in Wang, C., C. Ribera, and S. Li. 2012. On the identity of the type species of the genus *Telema* (Araneae, Telemidae). *ZooKeys* 251: 11–19. doi:10.3897/zookeys.251.3616

Cover Page Bottom: LOPEZ-MONCET André. *Telema* mâle sur toile. jpg Licensed Creative Commons Attribution Share-Alike 4.0